



POSTGRADUATE HANDBOOK

ZHEJIANG POLYTECHNIC INSTITUTE
POLYTECHNIC INSTITUTE, ZHEJIANG UNIVERSITY



浙江大學
ZHEJIANG UNIVERSITY

浙江大學
ZHEJIANG UNIVERSITY

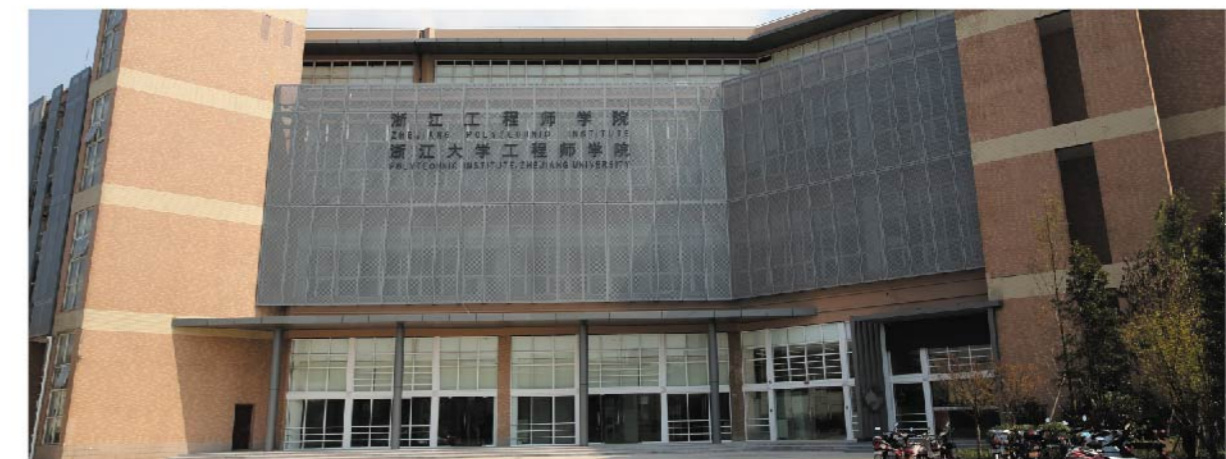


● DEAN'S MESSAGE	01	● SECTION III: SERVICES	
		The University Library	26
		Students' Union	26
		Student ID and Campus Card	27
		Parking and shuttle facilities	27
		Eating, Shopping & Entertainment	28
		Academic Calendar and Special events for new students ..	28
		Scholarships, grants and financial support	29
		Frequently Asked Questions	29
● SECTION I : INTRODUCTION		● APPENDIX	
About the Polytechnic Institute, Zhejiang University	02	Appendix 1 Useful Web Pages and telephone numbers.....	30
Unique features	03	Appendix 2 Traffic Guide	31
Facilities	03		
Innovation and training centre of Electrical Technology and Equipment	04		
Innovation and training centre of Robotics and Advanced Manufacturing	04		
Innovation and training centre of Information and Microelectronic Engineering ..	05		
Innovation and training centre of Energy and Environmental Engineering	05		
● SECTION II : PROGRAM OF STUDY			
Flow Chart of the training schedule for graduate students -	06		
Master of Engineering Program	07		
Mechanical Engineering Program (085201)	07		
Power Engineering Program (085206)	09		
Electrical Engineering Program (085207)	10		
Electronic and Communication Engineering Program (085208)	12		
Integrated and Circuit Engineering Program (085209)	14		
Control Engineering Program (085210)	15		
Computer Technology Program (085211)	17		
Architecture and Civil Engineering Program (085213)	18		
Chemical Engineering Program (085216)	19		
International cooperation program	23		
Master Program of Innovation & Entrepreneurship	24		

DEAN'S MESSAGE

New students, thank you for choosing to join us at Polytechnic Institute of Zhejiang University. We hope that you will benefit from and enjoy your program of study.

The Postgraduate Student Handbook is produced annually as a dedicated resource, to provide information and guidance on the administrative, academic and support arrangements for degree programs. This handbook contains some of the important information you will need as you progress through your studies. You can find more information on the University and Institute's websites, and you will of course receive plenty of guidance from members of staff throughout the year. In addition, if you feel that you need any personal advice, information or assistance, please feel free to approach relevant members of staff as detailed in this handbook and on our website. I hope you will find this handbook useful, and wish you well in your studies.



SECTION I : INTRODUCTION

Profile of Polytechnic Institute, Zhejiang University

The establishment of Zhejiang Polytechnic Institute (Polytechnic Institute, Zhejiang University) is an important step to respond to national and regional strategy of "Innovation-driven Development", "Made in China 2025" and provincial government development strategy. It is also an attempt and exploration on traditional teaching mode of the education of Professional Master of the field of engineering.

Polytechnic Institute (PIZJU) was proposed in July 2015, and officially inaugurated on September 12th, 2016, which gets supports from the Ministry of Education, Party Committees and governments at all levels. It is based on comprehensive advantages of high-level education of Zhejiang University, and insists on "government-dominated, college-enterprise cooperation, multidisciplinary and international cooperation". Polytechnic Institute upgrades itself into advanced engineering science and technology talent training base on enterprises, universities and research platform in engineering field for industrial transformation and upgrading. The establishment of the institute provides not only the technical support and intellectual protection, but also responds to the lack of applied engineering talents of science and technology in Chinese enterprises.

The Zhejiang Provincial Government and partner universities have made a strong commitment to develop PIZJU as a world class high-learning institute. As a specially designated reform zone in Zhejiang University, PIZJU has a high degree of autonomy. It has demonstrated rapid development in its management model, organizational structure and educational system. PIZJU has developed an effective model for training globally astute and creative talents.



Our Address:

Polytechnic Institute, Zhejiang University
269, Shi xiang Road, Gong Shu District, Hangzhou,310022
People's Republic of China
Telephone: +86-571-88981776

Unique features

Two graduate programs leading to Master of Science in Engineering: Master of Engineering (ME) and Master of Engineering Management(MEM);

High level teachers teams, invite the tutors with business management experience, provide academic resources for the interdisciplinary education teaching;

Special engineering management: Teaching Committee and the engineering management professional Master Education Center for the development of teaching activities and guarantee the quality;

Master's degree certificated by Zhejiang University, possible engineer title certificated by Department of Personnel and Department of Labor and Social Security of Zhejiang Province;

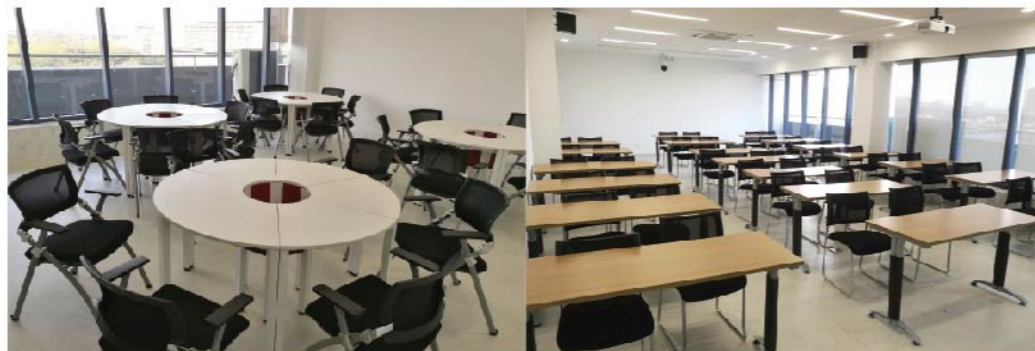
Engineering innovation centers, with the participation of domestic and foreign famous enterprises to build a practice base, to hold high level of engineering management practice activities;

Close cooperation with prestigious enterprises and foreign engineering high level universities.

Facilities

The Institute undertakes to provide:

- High quality staff, teaching and training support;
- High quality library, IT, laboratory and teaching facilities;
- Access to a wide range of activities that will enhance personal development and employ-ability;
- A range of services ensuring students feel supported when necessary;
- A safe working environment.



Innovation and training center

The first-phase project has invested about 87 million yuan for purchasing equipment, covers an area of nearly 2000 square meters, including the Innovation and training center of electrical technology and equipment, Robotics and advanced manufacturing, Information and Microelectronic Engineering and Information and Microelectronic Engineering. In 2017, Institute continues to build three new centers, Innovation and training center of Big Data and The Internet of Things, Automobile frontier technologies and Construction& civil engineering.

Innovation and training center of Electrical Technology and Equipment

It focuses on the training of engineering and technical talent with the application of new energy sources such as wind power and photo-voltaic. The first phase of investment funds about 28.5 million RMB.

Innovation and training center of Robotics and Advanced Manufacturing

It focuses on the training of advanced talents in engineering under the background of industrial innovation. The first phase of investment funds about 16 million RMB. It aims to develop a high level of scientific research and experimental conditions for the Master of Engineering and Doctor of engineering, and meet the teaching needs of integrated application of advanced manufacturing, robotics, computers, information sensing, control theory, internet-of-things , the Internet, big data and other frontier technology.



Innovation and training center of Information and Microelectronic Engineering

It focuses on the training of engineering technical talent of electronic information and micro electronics industry, according to the requirements of engineering innovative talents, especially the demand for high level research and technical talents for the development of information industry on the field of electronic information technology for Zhejiang province and Hangzhou city, combined with the industry-university cooperation and international cooperation. The first phase of investment funds about 15.2 million RMB.

Innovation and training center of Energy and Environmental Engineering

It focuses on the training of talents of good theoretical foundation and strong comprehensive quality, carry out the master of engineering, doctoral degree education and short-term training. The first phase of investment funds about 21 million RMB. It pays attention to strengthen the students' engineering design ability, innovation ability, scientific research consciousness and the international vision, to support China's sustainable energy system and the construction of new energy industry with Chinese characteristics.



Contact Information:

Mr.LI Lei

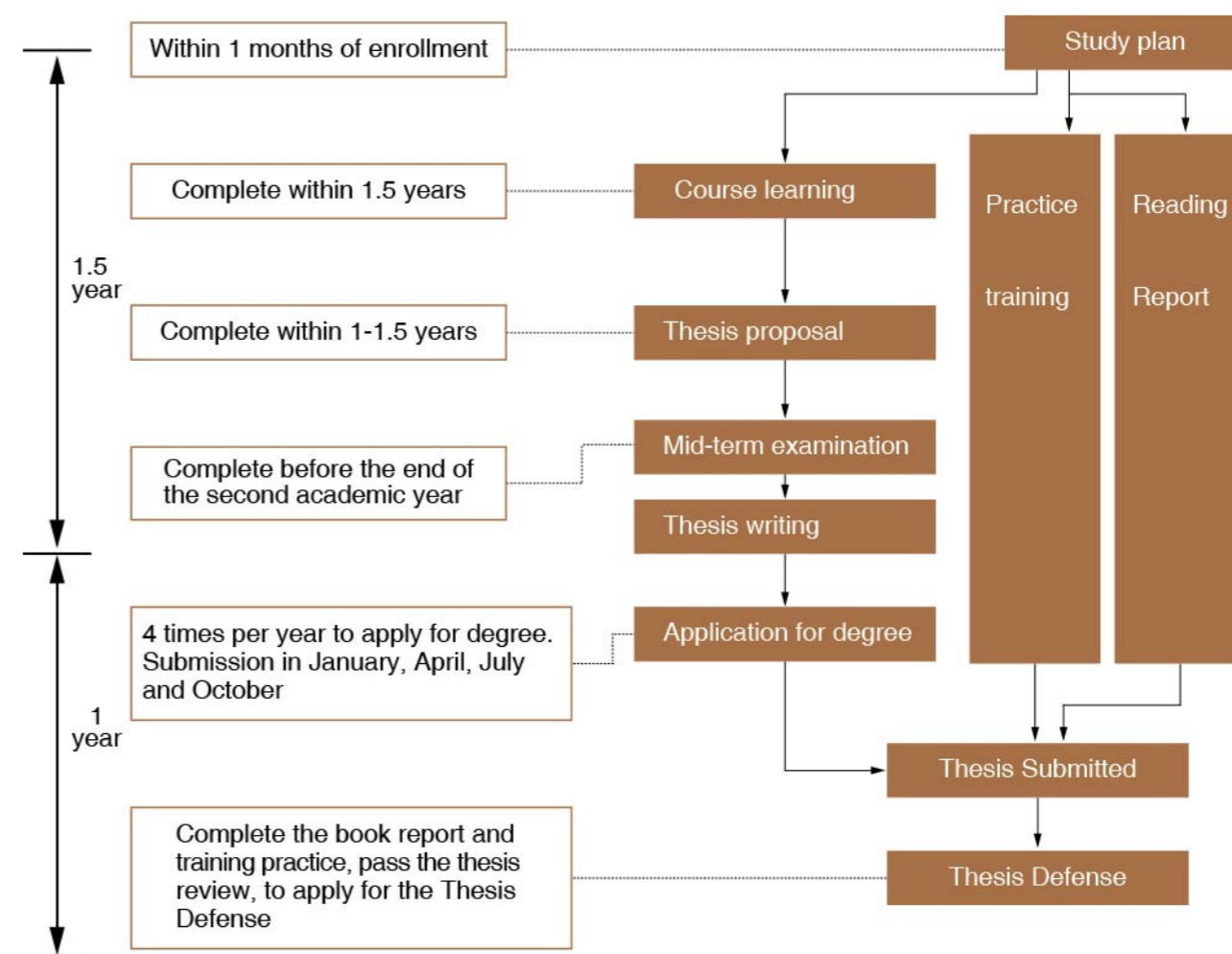
Tel: 0571-88018526

Email: lileipi@zju.edu.cn



SECTION II: PROGRAM OF STUDY

Flow Chart of the training schedule for graduate students





Master of Engineering Program (ME)

Mechanical Engineering Program (085201)

Schools and Departments	Polytechnic Institute	Type of Degree	Professional degree	Period of Study (Years)	2.5
Credits Required for Graduation	30	Minimum Credits for Public Degree Courses		5	
Minimum Credits for Professional Courses	23	Minimum Credits for Professional Degree Courses		14	

Program Objectives :

This program is a 2.5 years part-time program designed to equip graduates with the essential knowledge and skills of mechanical engineering that prepares the student for a career that can advance the creation and application of Intelligent Manufacturing Technology & Equipment for the benefit of society.

After graduation from program, the graduates should be able to demonstrate :

An ability to research and develop new technologies, new products, and new equipment;

An ability in reading foreign language materials of the field and master the international communication skills;

An ability to be become an application-type, inter-disciplinary and high level engineering technology and engineering management talent.

Book Reports:

The book reports contain 2 credits, master students should write 3 reading reports (including literature review and mid-term inspection and evaluation), students should make at least one presentations in public.

Research Proposal:

Research Proposal should be completed at the end of the third semester or the beginning of the fourth semester, through consulting literature, collecting information and research to determine the topic, the main content and the key issues to be resolved:

Requirements for Graduation:

Mechanical engineering master degree thesis subject must result from production practice or definite engineering background with application value; The topic could have many kinds such as the production application, the special research topic or the case analysis;

The thesis reviewers should contain 3 experts; The reviewer and thesis defense committee members shall have at least one expert with senior technical title from the front line of practical production.

Research Proposal:

Research Proposal should be completed at the end of the third semester or the beginning of the fourth semester, through consulting literature, collecting information and research to determine the topic, the main content and the key issues to be resolved:

Requirements for Graduation:

Mechanical engineering master degree thesis subject must result from production practice or definite engineering background with application value; The topic could take many forms such as the production application, the special research topic or the case analysis;

The thesis reviewers should contain 3 experts; The reviewer and thesis defense committee members shall have at least one expert with senior technical title from the front line of practical production.

Notes :

Upon application by the student and the agreement by the tutor, the graduate student could cross platform, cross disciplinary and cross direction to take the Professional degree course and Professional elective course.

Platform Course

Compulsory /Elective	Course Type	Course Code	Course Name	Credit	Total Credit Hours	Offering Term	Note
compulsory	Public degree course	0420002	The outline of dialectics of nature	1	24	Spring, Summer, Fall, Winter	
compulsory		6041902	Practical Communicative English	2	32	Fall, Winter	
compulsory		6041903	Chinese characteristic socialism theory and practice	2	32	Fall, Winter	
compulsory	Professional degree course	6042001	Science and Technology Writing	2	32	Spring, Summer	
compulsory		6041001	Engineering practice	4	64	Spring, Summer, Fall, Winter	
compulsory		6041015	Innovative design method and engineering practice	2	32	Fall, Winter	
compulsory		6041014	Advanced Measurement and Testing	2	32	Fall, Winter	
compulsory	Professional elective course	6043901	Engineering professional ethics	2	32	Spring, Summer	

Orientation Course

Mechanical Engineering Field

Compulsory /Elective	Course Type	Course Code	Course Name	Credit	Total Credit Hours	Offering Term	Note
Elective	Professional degree course	6041003	Manufacturing LOT technology	2	32	Spring, Summer	
Elective		6043001	Intelligent manufacturing training	3	48	Spring, Summer	
Elective		6041002	Frontiers of Engineering Technology	2	32	Spring, Summer	
Elective	Professional elective course	6043010	Quality engineering	2	32	Fall, Winter	
Elective		6043009	Product data management technique	2	32	Fall, Winter	
Elective		6043011	Robot technology	2	32	Fall, Winter	

1.2 Power Engineering Program (085206)

Schools and Departments	Polytechnic Institute	Type of Degree	Professional degree	Period of Study (Years)	2.5		
Credits Required for Graduation	24	Minimum Credits for Public Degree Courses		5			
Minimum Credits for Professional Courses	15	Minimum Credits for Professional Degree Courses		11			
Program Objectives:							
<p>The PE program is designed to provide each student with a solid foundation in the scientific and systematic knowledge of Power engineering that prepares the student for a career that can master advanced technical methods and modern technical means to solve engineering problems. After graduation from the ME program, the graduates should be able to demonstrate :</p> <p>An ability of application and development, master comprehensive knowledge and practice.</p> <p>An ability in reading foreign language materials of the field and master the international communication skills;</p> <p>An ability to work independently in the field of engineering technology and engineering management.</p>							
Book Reports:							
Master students should provide the literature review and make at least one presentation in public during the study;							
Research Proposal:							
<p>The subject selection of the Masters Thesis should come from engineering practice or have a clear engineering background, it could be the research or development of new technology, new equipment, new materials and new product.</p> <p>The proposal need to demonstrate the significance of the topics, the main research content and research programs, the degree thesis should be completed at the end of the first academic year or the beginning of the second year.</p>							
Requirements for Graduation:							
<p>(1)Power engineering master degree thesis must emphasizes the ability of comprehensive use of scientific theories, research methods and technical means to solve practical engineering problems; emphasize the technical difficulty and advancement; emphasize the new ideas, new methods and new progress; emphasize the possibilities of the creation of economic benefits and social benefits;</p> <p>(2)The thesis reviewers should contain 3 experts; The thesis defense committee members shall have 5 experts, the reviewer and the member of committee must have 1 expert with senior technical title from the front line of practical production.</p>							
Remarks:							
Upon application by the student and the agreement by the tutor, the graduate student may cross the platform and the discipline to take the related specialized course and the specialized elective course.							
Platform Course							
Compulsory /Elective	Course Type	Course Code	Course Name	Credit	Total Credit Hours	Offering Term	Note
compulsory	Public degree course	6041902	Practical Communicative English	2	32	Fall, Winter	
compulsory		6041903	Chinese characteristic socialism theory and practice	2	32	Fall, Winter	
compulsory		0420002	The outline of dialectics of nature	1	24	Spring, Summer Fall, Winter	
compulsory	Professional degree course	6042001	Science and Technology Writing	2	32	Spring, Summer	
compulsory		6041001	Engineering practice	4	64	Spring, Summer Fall, Winter	
compulsory	Professional elective course	6043901	Engineering professional ethics	2	32	Spring, Summer	

Orientation course							
Power Engineering							
Compulsory /Elective	Course Type	Course Code	Course Name	Credit	Total Credit Hours	Offering Term	Note
Compulsory	Professional degree course	6041016	Advanced Heat Transfer	2	32	Fall, Winter	
Compulsory		6041004	Power engineering technology frontier	3	48	Fall, Winter	
Elective	Professional elective course	6043003	High efficiency, low temperature storage technology of clean fuels	2	32	Spring Summer	
Elective		6043005	motor vehicles and engines test technology	2	32	Fall, Winter	
Elective		6043004	Technology and Engineering of the Use of new energy sources	2	32	Spring Summer	
Elective		6043002	Simulation and analysis of intelligent energy system	2	32	Fall, Winter	

1.3 Electrical Engineering Program (085207)

Schools and Departments	Polytechnic Institute	Type of Degree	Professional degree	Period of Study (Years)	2.5
Credits Required for Graduation	24	Minimum Credits for Public Degree Courses		5	
Minimum Credits for Professional Courses	17	Minimum Credits for Professional Degree Courses		17	
Program Objectives:					
<ul style="list-style-type: none"> - Produce graduates who are able to have an innovative entrepreneurial awareness and engineering practice ability - Produce graduates who are able to have a solid basic theory and broad professional knowledge in electrical engineering field. - Produce graduates who are able to solve practical problems, to undertake professional technical or management work, have a good professional quality and international perspective 					
Book Reports:					
Students should write at least one reading reports and make presentations in public within 6 semesters ;					
Research Proposal:					
The proposal need to demonstrate the significance of the topics, the main research content and research programs, the proposal should be completed more than one year in advance before the end of the study.					
Requirements for Graduation:					
Meet the requirements for a Postgraduate Diploma					



Platform Course							
Compulsory /Elective	Course Type	Course Code	Course Name	Credit	Total Credit Hours	Offering Term	Note
Compulsory	Professional degree course	6041902	Practical Communicative English	2	32	Fall, Winter	
Compulsory		0420002	The outline of dialectics of nature	1	24	Spring, Summer Fall, Winter	
Compulsory		6041903	Chinese characteristic socialism theory and practice	2	32	Fall, Winter	
Compulsory		6041005	Technology frontier of Electrical Engineering	2	32	Spring Summer	
Compulsory		6042001	Science and Technology Writing	2	32	Spring Summer	
Compulsory		6041001	Engineering practice	4	64	Spring, Summer Fall, Winter	
Compulsory	Professional elective course	6041001	Engineering professional ethics	2	32	Spring Summer	
Orientation course							
Electrical engineering							
Compulsory /Elective	Course Type	Course Code	Course Name	Credit	Total Credit Hours	Offering Term	Note
Compulsory	Professional degree course	6041019	Real-time computer control technology	2	32	Fall, Winter	
Compulsory		6041020	AC motor speed-governing theory and method	2	32	Fall, Winter	
Compulsory		6041018	Modern Power Electronics Circuit	3	48	Fall, Winter	
Compulsory		6041017	Electrical power system movement analysis	2	32	Fall, Winter	
Electrical process control							
Compulsory /Elective	Course Type	Course Code	Course Name	Credit	Total Credit Hours	Offering Term	Note
Compulsory	Professional degree course	6041019	Real-time computer control technology	2	32	Fall, Winter	
Compulsory		6041020	AC motor speed-governing theory and method	2	32	Fall, Winter	
Compulsory		6041021	modern control theory	3	48	Fall, Winter	
Compulsory		6041022	Intelligent control& intelligent system	2	32	Fall, Winter	

1.4 Electronic and Communication Engineering Program (085208)

Schools and Departments	Polytechnic Institute	Type of Degree	Professional degree	Period of Study (Years)	2.5		
Credits Required for Graduation	30	Minimum Credits for Public Degree Courses		5			
Minimum Credits for Professional Courses	20	Minimum Credits for Professional Degree Courses		8			
Program Objectives:							
<ul style="list-style-type: none"> - Produce graduates who are able to have an innovative entrepreneurial awareness and engineering practice ability - Produce graduates who are able to have a solid basic theory and broad professional knowledge in Electronic and Communication Engineering field - Produce graduates who are able to solve practical problems, to undertake professional technical or management work, have a good professional quality and international perspective 							
Book Reports:							
Master students should write four reading reports and make presentations in public within 6 semesters (1.5 years);							
Research Proposal:							
The research proposal should be completed before the end of the second school year.							
Requirements for Graduation:							
meet the requirements for a Postgraduate Diploma							
Platform Course							
Compulsory /Elective	Course Type	Course Code	Course Name	Credit	Total Credit Hours	Offering Term	Note
Compulsory	Public degree course	0420002	Practical Communicative English	1	24	Spring, Summer Fall, Winter	
Compulsory		6041903	The outline of dialectics of nature	2	32	Fall, Winter	
Compulsory		6041902	Chinese characteristic socialism theory and practice	2	32	Fall, Winter	
Compulsory	Professional degree course	6041311	Engineering practice	2	32	Spring, Summer Fall, Winter	



Compulsory	Public degree course	6041302	Electronic and Information Engineering Technology Management	2	32	Spring Summer	
Compulsory	Public degree course	6041301	Application design and practice of intelligent mobile Internet device	3	48	Spring Summer	
Compulsory	Professional elective course	6041401	Standards and intellectual property rights	2	32	Fall, Winter	
Elective	Professional elective course	6041504	Big data technology frontier	2	32	Fall, Winter	
Orientation course							
Power Engineering							
Compulsory /Elective	Course Type	Course Code	Course Name	Credit	Total Credit Hours	Offering Term	Note
Elective	Professional degree course	6041304	Manufacturing and testing of integrated circuits	3	48	Fall, Winter	take at least on 6041304 and 6043308
Compulsory		6041303	Chip design of embedded system	2	32	Fall, Winter	
Compulsory	Professional elective course	6043307	Radio Frequency IC Design	2	32	Spring Summer	
Elective		6041506	Cyberspace Security	2	32	Spring Summer	
Elective		6041501	Artificial intelligence	2	32	Fall, Winter	
Elective		6043310	Frontiers in electronics and Communications Engineering	2	32	Spring Summer	
Elective		6043308	Radio frequency measurement technology	2	32	Spring Summer	take at least on 6041304 and 6043308

1.5 Integrated and Circuit Engineering Program (085209)

Schools and Departments	Polytechnic Institute	Type of Degree	Professional degree	Period of Study (Years)	2.5
Credits Required for Graduation	30	Minimum Credits for Public Degree Courses		5	
Minimum Credits for Professional Courses	20	Minimum Credits for Professional Degree Courses		8	

Program Objectives:

- Produce graduates who are able to have an innovative entrepreneurial awareness and engineering practice ability
- Produce graduates who are able to have a solid basic theory and broad professional knowledge in Integrated and Circuit Engineering field
- Produce graduates who are able to solve practical problems, to undertake professional technical or management work, have a good professional quality and international perspective

Book Reports:

Master students should write 4 reading reports and make presentations in public within 6 semesters (1.5years);

Research Proposal:

Completed before the end of the winter term of second school year.

Requirements for Graduation:

meet the requirements for a Postgraduate Diploma

Platform Course

Compulsory /Elective	Course Type	Course Code	Course Name	Credit	Total Credit Hours	Offering Term	Note
Compulsory	Public degree course	6041902	Practical Communicative English	2	32	Fall, Winter	
Compulsory		0420002	The outline of dialectics of nature	1	24	Spring, Summer Fall, Winter	
Compulsory		6041903	Chinese characteristic socialism theory and practice	2	32	Fall, Winter	
Compulsory	Professional degree course	6041311	Engineering practice	2	32	Spring, Summer Fall, Winter	
Compulsory	Public degree course	6041302	Electronic and Information Engineering Technology Management	2	32	Spring Summer	
Elective		6041301	Application design and practice of intelligent mobile Internet device	3	48	Spring Summer	
Compulsory	Professional elective course	6041401	Standards and intellectual property rights	2	32	Fall, Winter	
Elective		6041504	Big data technology frontier	2	32	Fall, Winter	



Orientation course							
Integrated and Circuit Engineering							
Compulsory /Elective	Course Type	Course Code	Course Name	Credit	Total Credit Hours	Offering Term	Note
Compulsory		6041305	Fundamentals of IC design	2	32	Fall, Winter	
Elective	Professional degree course	6041306	Analog and mixed IC design	2	32	Spring Summer	
Compulsory		6041303	Embedded system chips design	2	32	Fall, Winter	
Compulsory		6041304	Manufacturing and testing of IC	3	48	Fall, Winter	
Compulsory	Professional elective course	6043307	Radio Frequency IC Design	2	32	Spring Summer	
Elective		6043308	Radio frequency measurement technology	2	32	Spring Summer	
Elective		6043309	Seminar of frontier on IC engineering	2	32	Spring Summer	

1.6 Control Engineering Program (085210)

Schools and Departments	Polytechnic Institute	Type of Degree	Professional degree	Period of Study (Years)	2.5
Credits Required for Graduation	24	Minimum Credits for Public Degree Courses		5	
Minimum Credits for Professional Courses	14	Minimum Credits for Professional Degree Courses		10	
Program Objectives:					
<ul style="list-style-type: none"> - Produce graduates who are able to have an innovative entrepreneurial awareness and engineering practice ability - Produce graduates who are able to have a solid basic theory and broad professional knowledge in Control Engineering field - Produce graduates who are able to solve practical problems, to undertake professional technical or management work, have a good professional quality and international perspective 					
Book Reports:					
Master students should write 1 reading reports and make presentations in public within 6 semesters (1.5years)					
Research Proposal:					
The proposal need to demonstrate the significance of the topics, the main research content and research programs,					
Requirements for Graduation:					
Meet the requirements for a Postgraduate Diploma					

Platform Course							
Compulsory /Elective	Course Type	Course Code	Course Name	Credit	Total Credit Hours	Offering Term	Note
Compulsory	Public degree course	6041902	Practical Communicative English	2	32	Fall, Winter	
Compulsory		6041903	Chinese characteristic socialism theory and practice	2	32	Fall, Winter	
Compulsory		0420002	The outline of dialectics of nature	1	24	Spring, Summer Fall, Winter	
Compulsory	Professional degree course	6041506	Cyberspace Security	2	32	Spring Summer	
Compulsory		6041504	Big data technology frontier	2	32	Fall, Winter	
Compulsory		6041401	Standards and intellectual property rights	2	32	Fall, Winter	
Orientation Course							
Control Engineering							
Compulsory /Elective	Course Type	Course Code	Course Name	Credit	Total Credit Hours	Offering Term	Note
Compulsory	Professional degree course	6041402	Industrial robot system and control	3	48	Fall, Winter	
Compulsory		6041403	Intelligent control	2	32	Spring Summer	
Compulsory	Professional elective course	6043404	Industrial machine vision algorithm and its application	2	32	Spring Summer	
Compulsory		6043405	Industrial mobile robot	2	32	Spring Summer	
Compulsory		6041501	Artificial intelligence	2	32	Fall, Winter	
Elective		6041503	Operating system and embedded design	2	32	Fall, Winter	
Elective		6041003	Manufacturing IOT technology	2	32	Spring Summer	

1.7 Computer Technology Program (085211)

Schools and Departments	Polytechnic Institute	Type of Degree	Professional degree	Period of Study (Years)	2.5		
Credits Required for Graduation	24	Minimum Credits for Public Degree Courses		5			
Minimum Credits for Professional Courses	12	Minimum Credits for Professional Degree Courses		10			
Program Objectives :							
<p>The ACE program is designed to provide each student with a solid foundation in the scientific and systematic knowledge of Architecture and Civil Engineering that prepares the student for a career that can master advanced technical methods and modern technical means to solve engineering problems. After graduation from the ME program, the graduates should be able to demonstrate :</p> <p>An ability of application and development, master comprehensive knowledge and practice.</p> <p>An ability in reading foreign language materials of the field and international communication skills;</p> <p>An ability to work independently in the field of engineering technology and engineering management.</p>							
Book Reports:							
Master students should write about 6000 words of the literature review report, with reference bibliography;							
Research Proposal:							
All master students are required to submit a research proposal within the first academic year, no less than 1.5 years before dissertation defense							
Learning Outcomes:							
Specify the form of thesis under the guidance of the tutor (engineering design or product development report, research paper, etc.).							
Platform Course							
Compulsory /Elective	Course Type	Course Code	Course Name	Credit	Total Credit Hours	Offering Term	Note
Compulsory	Public degree course	6041903	Chinese characteristic socialism theory and practice	2	32	Fall, Winter	
Compulsory		6041902	Practical Communicative English	2	32	Fall, Winter	
Compulsory		0420002	The outline of dialectics of nature	1	24	Spring, Summer Fall, Winter	
Compulsory	Professional degree course	6041501	Artificial intelligence	2	32	Fall, Winter	
Compulsory		6041503	Operating system and embedded design	2	32	Fall, Winter	
Compulsory		6041504	Big data technology frontier	3	32	Fall, Winter	
Compulsory		6041506	Cyberspace Security	2	32	Spring Summer	
Compulsory		6041505	PaaS ore technologies of cloud computing	2	32	Spring Summer	
Elective	Professional elective course	6041401	Standards and intellectual property rights	2	32	Fall, Winter	

Orientation Course							
Computer Technology							
Compulsory /Elective	Course Type	Course Code	Course Name	Credit	Total Credit Hours	Offering Term	Note
Elective	Professional elective course	6043509	Advanced computer networks	2	32	Spring Summer	
Elective		6041402	Industrial robot system and control	3	48	Fall, Winter	
Elective		6043502	Human computer interaction and design	2	32	Fall, Winter	
Elective		6041301	Mobile internet intelligent device application design and practice	3	48	Spring Summer	
Elective		6043508	software architecture	2	32	Spring Summer	
Elective		6043507	Data warehouse and business intelligence	2	32	Spring Summer	

1.8 Architecture and Civil Engineering Program (085213)

Schools and Departments	Polytechnic Institute	Type of Degree	Professional degree	Period of Study (Years)	2.5		
Credits Required for Graduation	24	Minimum Credits for Public Degree Courses		5			
Minimum Credits for Professional Courses	15	Minimum Credits for Professional Degree Courses		11			
Program Objectives :							
<p>Produce graduates who are able to :</p> <ul style="list-style-type: none"> - demonstrate an innovative entrepreneurial awareness and engineering practice ability - have a solid basic theory and broad professional knowledge in Architecture and Civil Engineering field - solve practical problems, undertake professional technical or management work, have a good professional quality and international perspective 							
Book Reports:							
Master students should write 1 reading reports and make presentations in public within 6 semesters (1.5years)							
Research Proposal:							
According to the needs of tutors							
Requirements for Graduation:							
Encourage students publish academic papers or articles in the field of civil engineering, encourage the invention patent, transfer research into intellectual property.							
Platform Course							
Compulsory /Elective	Course Type	Course Code	Course Name	Credit	Total Credit Hours	Offering Term	Note
Compulsory	Public degree course	6041902	Practical Communicative English	2	32	Fall, Winter	
Compulsory		0420002	The outline of dialectics of nature	1	24	Spring, Summer Fall, Winter	

Compulsory	Public degree course	6041903	Chinese characteristic socialism theory and practice	2	32	Fall, Winter	
Compulsory	Professional degree course	6042001	Science and Technology Writing	2	32	Spring Summer	
Compulsory		6041001	Engineering practice	4	64	Spring, Summer Fall, Winter	
Compulsory	Professional elective course	6043901	Engineering professional ethics	2	32	Spring Summer	
Orientation course							
Architecture and Civil Engineering							
Compulsory /Elective	Course Type	Course Code	Course Name	Credit	Total Credit Hours	Offering Term	Note
Compulsory	Professional elective course	6041008	Engineering experiments and tests technology	2	32	Fall, Winter	
Compulsory		6041007	modern structure design theory and its application	3	48	Fall, Winter	
Compulsory		6041006	Progress in Civil Engineering	2	32	Fall, Winter	
Compulsory		6041009	Foundation engineering and underground structure	2	32	Spring Summer	
Compulsory		6041010	Engineering economics and management	2	32	Spring Summer	



1.9 Chemical engineering Program (085216)

Schools and Departments	Polytechnic Institute	Type of Degree	Professional degree	Period of Study (Years)	2.5
Credits Required for Graduation	28	Minimum Credits for Public Degree Courses		5	
Minimum Credits for Professional Courses	21	Minimum Credits for Professional Degree Courses		15	
Program Objectives:					
Produce graduates who are able to					
<ul style="list-style-type: none"> - have an innovative entrepreneurial awareness and engineering practice ability - have a solid basic theory and broad professional knowledge in Chemical engineering field - solve practical problems, to undertake professional technical or management work, have a good professional quality and international perspective 					
Book Reports:					
Master students should write 4 reading reports and make presentations in public within 6 semesters (1.5years);					
Research Proposal:					
The proposal should be completed within six months after the end of the course. The main contents of the proposal should include: the background and significance, the development, the intend and the expected results, the work plan and literature list and the views of teachers.					
Requirements for Graduation:					
Complete the courses and credits, complete the reading report and degree thesis after the validation of the academic degree evaluation committee.					

Platform Course							
Compulsory /Elective	Course Type	Course Code	Course Name	Credit	Total Credit Hours	Offering Term	Note
Compulsory	Public degree course	0420002	Dialectics of Nature	1	24	Spring, Summer Fall, Winter	
Compulsory		6041902	Practical Communicative English	2	32	Fall, Winter	
Compulsory		6041903	Theory and Practice of Socialism with Chinese Characteristics	2	32	Fall, Winter	
Compulsory	Professional degree course	6042001	Science and Technology Writing	2	32	Spring Summer	
Compulsory		6041001	Engineering practice	4	64	Spring, Summer Fall, Winter	
Compulsory		6043901	Engineering professional ethics	2	32	Spring Summer	
Specialty Curriculum							
Chemical Engineering							
Compulsory /Elective	Course Type	Course Code	Course Name	Credit	Total Credit Hours	Offering Term	Note
Compulsory	Professional degree course	6041011	Transport process principle	3	48	Fall, Winter	
Selective		6043007	Application and development of chemical network resources	2	32	Fall, Winter	
Compulsory		6041013	Industrial ecology and pollution control	2	32	Fall, Winter	
Compulsory		6041023	Frontiers of international chemical industry	2	32	Spring Summer	
Compulsory	Professional elective course	6041012	Green chemistry and chemical engineering	2	32	Fall, Winter	
Selective		6043006	Advanced separation engineering	2	32	Spring Summer	
Selective		6043008	Catalytic Reaction Engineering	2	32	Spring Summer	

2. Master of Engineering Management Program (125600)

Schools and Departments	Polytechnic Institute	Type of Degree	Professional degree	Period of Study (Years)	2.5		
Credits Required for Graduation	32	Minimum Credits for Public Degree Courses		5			
Minimum Credits for Professional Courses	24	Minimum Credits for Professional Degree Courses		16			
Program Objectives:							
The MEM program is to develop students' fine political consciousness and moral quality, master the systematic management theory, modern management methods, as well as specialized knowledge in the field of Engineering, high level, innovative and applied talent in the field of Engineering Management							
After graduation from the MEM program, the graduates should be able to demonstrate:							
<ul style="list-style-type: none"> - An ability of planning, organizing, coordinating and decision - An ability in reading foreign language materials of the field and international communication skills; - An ability to work independently in Engineering Management 							
Book Reports:							
Master students should write 4 reading reports and make presentations in public within 6 semesters (1.5years);							
Research Proposal:							
The Research Proposal should be completed at the end of the third semester or the beginning of the fourth semester under the guidance of tutor, through literature review and collection to determine the thesis topic, the main contents and key problems to be solved. Reading not less than 30 papers before opening the proposal.							
Requirements for Graduation:							
Complete the courses and credits, complete the reading report and degree thesis after the validation of the academic degree evaluation committee.							
Platform Course							
Compulsory /Elective	Course Type	Course Code	Course Name	Credit	Total Credit Hours	Offering Term	Note
Compulsory	Public degree course	6041902	Practical Communicative English	2	32	Fall, Winter	
Compulsory		0420002	The outline of dialectics of nature	1	24	Spring, Summer Fall, Winter	
Compulsory		6041903	Chinese characteristic socialism theory and practice	2	32	Fall, Winter	
Compulsory	Professional degree course	6043901	Engineering professional ethics	2	32	Spring Summer	
Compulsory		6041607	Financial management	2	32	Spring Summer	
Compulsory		6041609	Human resource management	2	32	Fall, Winter	
Compulsory		6041601	Managerial mathematics	2	32	Fall, Winter	
Compulsory		6041610	Construction of entrepreneurial ability	2	32	Spring Summer	

Compulsory	Professional degree course	6041606	Project management	2	32	Fall, Winter	
Compulsory	Professional elective course	6043611	Seminar and Discussion on Engineering Management	1	24	Spring Summer	
Compulsory		6043612	Engineering management practice	2	32	Spring, Summer Fall, Winter	
Orientation course							
Manufacturing management direction							
Compulsory /Elective	Course Type	Course Code	Course Name	Credit	Total Credit Hours	Offering Term	Note
Compulsory	Professional degree course	6041605	Engineering decision making methods and Applications (manufacturing direction)	2	32	Fall, Winter	
Compulsory		6041603	Engineering Economics (manufacturing direction)	2	32	Fall, Winter	
Selective	Professional elective course	6043604	Knowledge management	2	32	Fall, Winter	
Selective		6043602	Quality control	2	32	Fall, Winter	
Selective		6043601	Lean Thinking & Lean manufacturing	2	32	Spring Summer	
Selective		6043603	Product development and data management	2	32	Fall, Winter	
Civil management direction							
Compulsory /Elective	Course Type	Course Code	Course Name	Credit	Total Credit Hours	Offering Term	Note
Compulsory	Professional degree course	6041602	Engineering Economics (Civil Engineering)	2	32	Fall, Winter	
Compulsory		6041604	Engineering Decision-Making Method and Applications (Civil Engineering)	2	32	Spring Summer	
Selective	Professional elective course	6043610	Engineering cost and pricing control	2	32	Fall, Winter	
Selective		6043609	Construction regulation and project contract management	2	32	Fall, Winter	
Selective		6043607	International Engineering and general contracting management	2	32	Fall, Winter	
Selective		6043608	Real Estate Operation and Management	2	32	Fall, Winter	

International cooperation program

In September 4, 2016, Polytechnic Institute has signed a cooperation agreement with three most famous engineering Universities- École Polytechnique, Ensta ParisTech and Télécom ParisTech, to carry out training project cooperation double master innovation management, develop an international perspective of Engineering Science and technology management talent and international elite engineers.



Brief introduction of three cooperation partner schools

École Polytechnique is a leading French institute which combines top-level research, academics, and innovation at the cutting-edge of science and technology. Its curriculum promotes a culture of excellence with a strong emphasis on science, anchored in humanist traditions. The school produces socially responsible professionals who excel in leading complex and innovative projects which address current and future challenges facing our society. The institute ranked N°1 Best French Grandes Écoles in Science and Technology in 2016.

ENSTA ParisTech was founded in 1741, belongs to the foremost graduate schools of engineering in France. It offers its students a broad education in engineering with the aim of enabling them to design, carry out and manage complex technical projects. In this view, the institute provides a high-level scientific and technological education, which is constantly updated to keep pace with changes in the leading edge technologies, and supplemented by languages, humanities, and the skills needed in business life such as law, communication, economics, accounting and management.

Télécom ParisTech was founded in 1878, is one of the elite engineering school in the field of information science and technology. The institute is a founding member of the ParisTech and ParisSaclay University, with approximately 1500 students enrolled each year, of which about 55% are international students, and more than 90% of them find ideal jobs within the next 4 months after graduation.

Master Program of Innovation & Entrepreneurship

Program Objectives:

This program aims at cultivate students and professionals in the field of technology innovation. This program contains an international teaching team, composed of professors in the French side of the University, CEO/CTO of Chinese and French Start-ups and famous companies , senior consultant and senior experts in the field of entrepreneurship and innovation. The main purpose of the project is to cultivate the talents who can accept the challenge and explore the innovation, so as to get the technical opportunity. Graduates who meet the requirements of the graduation of the school will be awarded the advanced master degree accredited by Conference des Grandes Ecoles.

Selection of students:

After the interview by the jury of Chinese and French Professors, the admitted students must have good professional knowledge with excellent English skills, and ensure adequate time to participate in the aboard study and internship program.

Teaching methods:

This program will combine the local and foreign teaching resources

Curriculum:

The preliminary program was as shown in the table, the total credits are 31. In the second year, students will go to France to participate in the 4-6 months of study and participate in the industrial projects.

Compulsory	CN cdt	
English	2	32 h (ZJU)
Critical Thinking	1	16 h (ZJU)
Engineering Ethics	1	16 h (ZJU)
Cross Culture Communication (1)	1	16h (ZJU)
Cross Culture comm and cultural studies (2)	1	16h(Telecom)

Science & Technology		
Engineering Economics- statistical analysis	2	32 h (ZJU)
Lean Thinking & Process Management	2	32 h (ZJU)
Digital Technology	2	32 h (Telecom)
Big Data Analytic	2	32 h (Telecom)

Business & Management		
Marketing Management	1	16 h (ZJU)
Corporate Finance	1	16 h (ZJU)
Leadership & Team Management	2	32 h (ZJU)
Business Law	1	16h (ZJU)
Project Management	1	16h (ZJU)
Design Thinking & Innovation	2	32 h (Lead Telecom)
Entrepreneurial Strategic Management	1	16 h (Lead ENSTA)
Business Model in Digital Era	2	32 h (Lead X)

Industry Module		
Industrial Project	4	France + China
Industrial Seminars	2	France + China

Contact Information:

Email: wang_dw@zju.edu.cn

Tel: 0086(0)571- 88285051

Application for international students

All international students must apply through the International Education College.

Master's Degree Programs Admission



http://iczu.zju.edu.cn/english/redir.php?catalog_id=227

Doctoral Degree Programs Admission



http://iczu.zju.edu.cn/english/redir.php?catalog_id=228



SECTION III: SERVICES

The University Library

The Library supports your studies by providing study space, access to digital and print collections, and staff to help you find and use Library resources effectively. You'll find all the information you need to get started at <http://libweb.zju.edu.cn>

ZUL consists of five branch libraries: Yuquan Campus Library, Xixi Campus Library, Huajiachi Campus Library, Agriculture & Medical Science Library and Basic Branch Library in Zijingang Campus, with a building area of 86,000 square meters and 5282 seats. So far, the total collections of the library amount to 5,496,000 volumes, including 180,000 thread-bound ancient Chinese books. The Zhejiang University Collections have collected about 10000 Academic publications and manuscripts by the University faculty members and alumni. The Digitized literature resource of ZUL rank highest level among the Chinese university libraries and approaches to the topmost level of famous university libraries in the world. Currently ZUL holds over 400 databases covering all disciplines of Zhejiang University, 1,510,000 Chinese and foreign e-books, nearly 50,000 Chinese and Foreign e-journals. Zhejiang University is planning to build a new Library & Information Center building in Zijingang Campus now. The services will be further enhanced after being completed.

Students' Union

The Students Union undertakes to:

Offer students a means to feedback to the University and to enable continuous improvement of the services provided;

Support students to ensure they receive fair treatment, are treated equally and are aware of their rights and responsibilities;

Assist students with academic and welfare problems;

Provide a range of sports clubs, societies and other activities to enhance personal development, meet other students and develop hobbies and interests;

Represent the interests of all students at local, regional and national level.

The Union contains a Presidium and five Departments: Department of public affairs, News Information, Sports and cultural activities, academic development and external relations.

Every student at the school is automatically a member of Students' Union. The Students' Union exists to enhance your student life through activities, sport, representation, entertainment, services and support.

For more information, please contact the students' affairs office of school.

Student ID and Campus Card

A unique student ID will be assigned to every PI student once he/she is admitted. It is the official form of identification required for all students, and should be in the individual students' possession at all times. The campus card is used as a form of identification as well as an electronic purchase card in all the campuses of ZJU. Students can use their campus cards to get registered, go to libraries to read and borrow books, receive treatment in the campus hospital, and pay for what they have consumed on campus. Regarding how to use the campus card, please read "Instructions of Using Campus Card" below: Instructions of Using Campus Card Applying for the card: The Campus Card Operation Center is responsible for the issue of campus card.

Parking and shuttle facilities

As a result of the increase in the number of vehicles on the campus in the recent times, some level of restricted parking has had to be implemented.

To ensure proper management of the University's limited parking resources and the security of our students, faculty and staff, members of the campus community are required to apply for a parking permit directly to the Director of Security at the Security Department. Parking permits are issued to vehicles. These permits also grant use of campus roadways. Parking permits should be affixed to the front windshield of the vehicles in a conspicuous manner so that they can easily be seen by Security. Also, special parking permits are issued to concessionaire, visitors and persons with disabilities and/or temporary handicaps by applying directly to the Director of Security. Please remember that parking permits authorize the vehicles to be parked in the relevant parking areas but they do not guarantee a parking spot.

In addition to the University Facilities, as a student of PIZJU you will also have access to a number of facilities of City college, Zhejiang University.

Eating, Shopping & Entertainment

A number of eating places on campus provide not just food and drink, but a meeting place for social interaction with your peers. In addition there are several privately managed recreational facilities in the area that students can access. There are 2 major shopping malls (Century Mart and Auchan) located within 2 kilometer of the campus. You can get a variety of items ranging from food and clothes to specialty items. Banking facilities (BOC, ICBC, CCB, ABC) are located at the the Jinhua Road within 2 kilometers from the school.

There are three international student dining hall respectively located in the International College Building on Yuquan Campus, Overseas Student Dormitory Building at the main gate of Yuquan Campus and Overseas Student Dormitory Building on Hua-jia-chi Campus. Meals are served in a la carte manner.

Students can also have your meals in the student cafeterias on different campuses. Before having meals there, you need to buy a pre-paid Meal Card from the cafeterias and it is advisable to bring your own dinnerware.

Academic Calendar and Special events for new students

There is a special orientation for new students every semester. Orientation activities are held by Faculties and Departments, the Guild of Students, Student Advisory Services. There are also several Campus tours which are organized to familiarize new students with the campus and its environments. Take a look at the schedule and save the dates on your calendar! We have highlighted those events which may be interest to you as a postgraduate student.

EVENT	DATE
Test for the new students	At the beginning of each academic year
Visit of the Innovation and training center	
New students' beginning education on campus	
Seminars on mental health	
Class meeting	
Seminars on lab safety	
School opening ceremony	
University opening ceremony	

Scholarships, grants and financial support

There are scholarships available to help you with research costs, all the scholarship information is prescribed by the International Education College.

“Chinese Government Scholarship – Chinese University Program” of Zhejiang University

Zhejiang University Scholarship for International Postgraduate Students

Zhejiang University Marine Scholarship of China

“Asian Future Leaders Scholarship Program”

Zhejiang University Scholarship—Two-High Doctoral Program

More info: http://iczu.zju.edu.cn/english/redir.php?catalog_id=248

Frequently Asked Questions

What do I do if I need a leave of absence or decide to withdraw from the course?

We would advise discussing the matter with your personal tutor and other relevant members of the course team. If you decide to pursue this course of action, then you will need to fill out a change of status form and send it to your course administrator.

Leave of Absence

If you are planning to take time off from your studies in the future, you will need to apply for an official Leave of Absence <http://grs.zju.edu.cn/grsinfo.html>.

- (1) Those who leave or go to hospital for treatment for more than 1 months within 1 semester;
- (2) Those who have contracted infectious diseases and the doctor recommended to rest for more than 1 months;
- (3) Those who leave for a total of more than 1 months within 1 semester;
- (4) Those who has married approved by the school;
- (5) Other reasons can not be registered.

Extension Policy ?

If a postgraduate student cannot finish his/her study in time, he/she may apply for extension. The longest extension is three years.

When a student wants to apply for extension, please make application half year in advance. He/she need to fill in “浙江大学研究生学籍异动申请表”, and the application should be approved by his/her supervisor.



APPENDIX

Appendix 1: Useful Web Pages and Telephone Numbers

Useful University Web Pages

Zhejiang University <http://www.zju.edu.cn/>

Polytechnic Institute, Zhejiang University <http://pi.zju.edu.cn/>

Graduate School, Zhejiang University <http://grs.zju.edu.cn/english/>

The mail system of Zhejiang University <http://zjuem.zju.edu.cn/>

Zhejiang University graduate student service network <http://regi.zju.edu.cn>

Graduate management information system <http://grs.zju.edu.cn/grsinfo.html>

Mental health education and counseling center <http://www.xlzx.zju.edu.cn/>

The International College http://iczu.zju.edu.cn/english/redir.php?catalog_id=223

Telephone Numbers

POLICE: 110 (12 languages service available)

FIRE: 119

PARAMEDICS: 120

Telephone Number Inquiry: 114

Division of Exit-Entry Administration of Hangzhou Public Security Bureau

8728 0185 (Chinese)

8728 0561/8728 0539 (Non Chinese)

Polytechnic Institute Office:

8828-5061 (Students Affairs)

8829-4578 (Teaching Affairs)

8898-1867 (General Affairs)

Appendix 2: Traffic Guide

Tips for Taxis

请送我去浙江大学工程师学院

Please send me to the Institute Polytechnic, Zhejiang University, thank you!

地址: 杭州市石祥路269号

Add: Shi Xiang Road No. 269, Hangzhou

请送我去浙江大学紫金港校区

Please send me to the Zijingang Campus, Zhejiang University, thank you!

地址: 西湖区余杭塘路866号

Add: Yuhangtang Road No.866, Hangzhou

请送我去杭州东站

Please send me to the Hangzhou East Station, thank you!

请送我去萧山机场

Please send me to the Xiaoshan Airport, thank you!

请送我去西湖景区

Please send me to the West Lake, thank you!

XiaoShan Airport Shuttle

Hangzhou East Station line	
Airport departure time	07:30, 08:00 to 22:00 every 15 minute
	22:30, 23:00, 23:30, 00:10, 00:50, 01:20
East Station departure time	05:30 to 9:00 every 30 minute
	9:00 to 21:00 every 15 minute

Ticket price: 20 yuan

Information Tel: +86 57196299 Travel time about 30 minutes

Wulinmen line	
Airport departure time	The first departure at 07:30
	08:00---22:00 every 15 minutes
	22:00 to 02:00 every 30 minutes
	02:00 to the end of the flight
Wulinmen departure time	05:00---17:00 every 15 minutes
	17:00---21:00 every 30 minutes

Ticket price: 20 yuan

Information Tel: +86 57196299 Travel time about 45minutes

More Info: <http://www.hzairport.com/bus.aspx>

Campus shuttle

(G1) Zijingang Campus, ZJU - Institute Polytechnic, ZJU

Departure time : 07:05

Institute Polytechnic, ZJU - Zijingang Campus, ZJU

Departure time : 17:00

(G2) Yuquan Campus, ZJU - Institute Polytechnic, ZJU

Departure time : 07:05

Institute Polytechnic, ZJU - Yuquan Campus, ZJU, ZJU

Departure time : 17:00

(G3) Xixi Campus, ZJU - Institute Polytechnic, ZJU

Departure time : 07:05

Institute Polytechnic, ZJU - Xixi Campus, ZJU

Departure time : 17:00

(G6) Huajiachi Campus, ZJU - Institute Polytechnic, ZJU

Departure time : 07:05

Institute Polytechnic, ZJU - Huajiachi Campus, ZJU

Departure time : 17:00

More info : <http://www.zucc.edu.cn/index.php?c=index&a=tlist&catid=58>